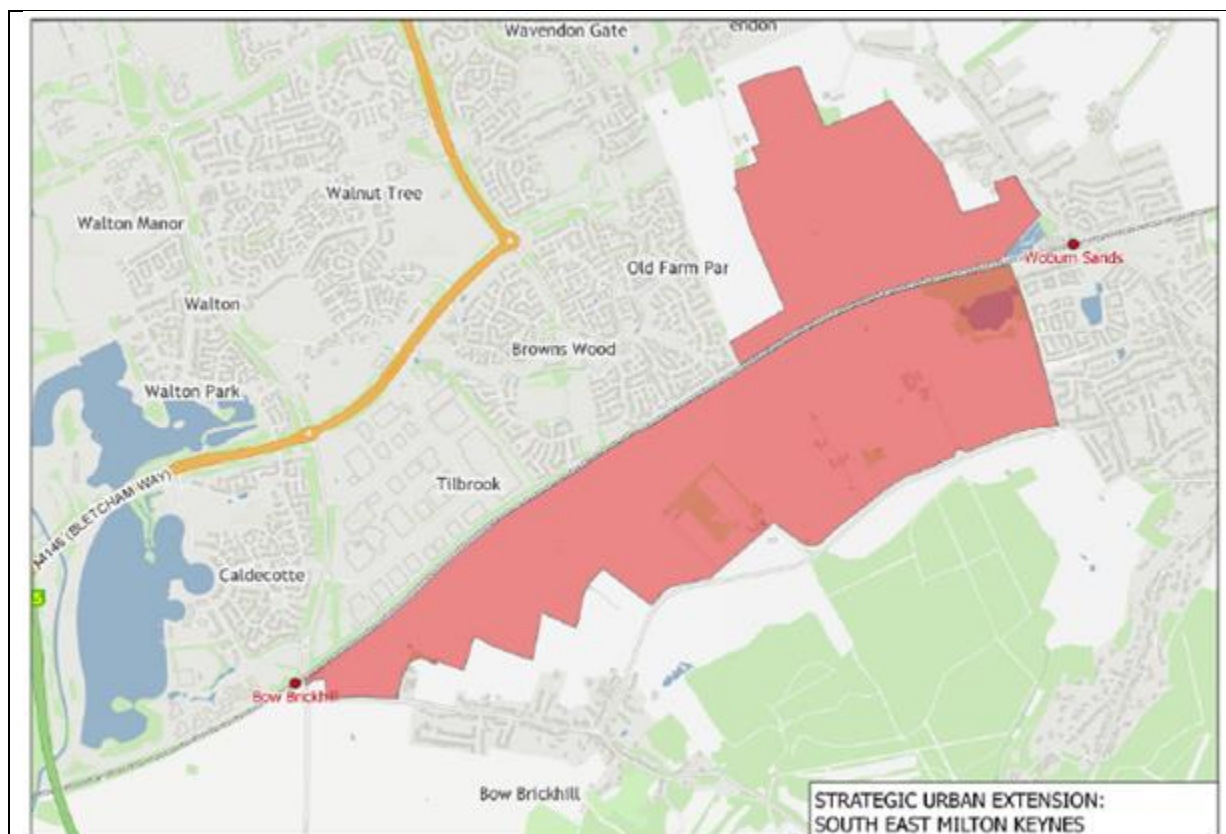


Unitary Councillor Report

(Snippets) Report from Cllr David Hopkins, Cllr Victoria Hopkins & Cllr Alice Jenkins – Representing Little Brickhill at MK Council

February 2019



South East Milton Keynes Strategic Urban Extension (or SEMK) is a draft allocation within Plan:MK, covering an area of land approximately 210 hectares in size encompassed by Tilbrook, Browns Wood and Wavendon to the North, Woburn Sands to the East, the Green Sands Ridge to the south, and Bow Brickhill to the west.

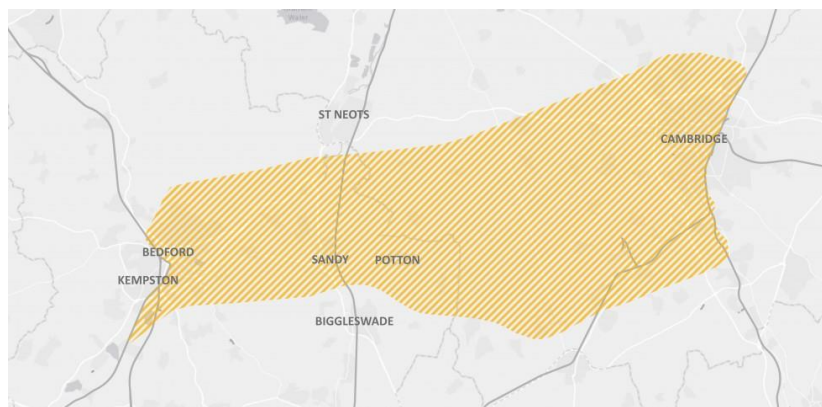
The draft allocation within Plan:MK, under Policy SD13, allocates the land for around 3,000 homes, 7 Gypsy and Traveller pitches, and a range of social and green infrastructure provision.

Cabinet 5 March

Adoption of Plan:MK

To consider recommending to Council that the Local Plan, Plan:MK be adopted as part of the formal Development Plan for the Borough. It will thus be afforded full weight in the determination of planning applications and appeals.

East West Rail Update



East West Rail is creating a new rail connection between Oxford and Cambridge. This will connect communities, making it faster, easier and cheaper to travel in the local area, as well as opening up job opportunities, supporting local business and helping the economy to grow. You can read more about the scheme [here](https://eastwestrail.co.uk/haveyoursay).

While the Western Section between Oxford and Bedford can be built by reinstating and upgrading old rail lines, for the Central Section between Bedford and Cambridge we need to build an entirely new rail line. The final alignment of this rail line and new stations will be located within the broad area shown on the above map.

<https://eastwestrail.co.uk/haveyoursay>

A421

The Central Bedfordshire Council (CBC) project to widen the A421 into dual carriageway will need two bridges to be extended: the Cranfield Road bridge, plus a footbridge near Hulcote that will safely take pedestrians, horse riders and cyclists over the wider A421 and the M1 (via four public rights of way).

January & February Weekend Closures

To prepare for these bridges to be extended, CBC need to make road closures for the safety of its workers and the public.

From 8pm on Friday 15 February until 6am on Monday 18 February, both the A421 (from Eagle Farm roundabout to Junction 13 of the M1) and Cranfield Road will be closed. This will allow CBC to lift and put in place three sections of the temporary bridge by crane. CBC will try to limit any road closures to during the least busy times. And, if their contractors finish quickly, then they will re-open the roads early to minimise any inconvenience to you.

Cranfield Road Bridge Closure

To extend the permanent bridge on Cranfield Road, CBC need to close it from May 2019. The bridge is expected to be closed for up to 14 months whilst the improvements are done.

CBC is working with contractors to reduce this period, if possible.

Diversions:

The M1 road will be open, or visit the CBC website for diversion details. CBC apologise for any inconvenience caused, and they thank you for your patience during the roadworks



Snippets – Forward Plan

CABINET: 5 FEBRUARY 2019	
6.30 PM IN THE CIVIC OFFICES	
Council Budget To consider the Council Budget 2019/20 and Medium Term Financial Plan 2019/20 – 2022/23.	Cabinet Councillor Middleton (Cabinet member for Resources and Innovation)
Landscape Transformation Vision To note and agree the proposed direction of the Environment & Landscaping Vision for Milton Keynes.	Cabinet Councillor Martin Gowans Cabinet Member for Public Realm
CABINET: 5 MARCH 2019	
6.30 PM IN THE CIVIC OFFICES	
Speeding Reduction Action Plan To consider adopting a policy and action plan to address community concerns of speeding.	Cabinet Councillor Gowans (Cabinet member for Public Realm)
Adoption of Plan:MK To consider recommending to Council that the Local Plan, Plan:MK be adopted as part of the formal Development Plan for the Borough. It will thus be afforded full weight in the determination of planning applications and appeals.	Cabinet Councillor Legg (Cabinet member for Customer Services)
Highways Infrastructure Maintenance and Improvement Programme 2019/20 to 2021/22. To consider approving the highway infrastructure maintenance and improvement programme for the three year period 2019/2020 to 2021/22.	Cabinet Councillor Gowans (Cabinet member for Public Realm)

DELEGATED DECISIONS: 12 FEBRUARY 2018					
South Caldecotte Development Framework Report To consider authorising the undertaking of formal consultation on the draft South Caldecotte Development Framework.		Delegated Decisions Councillor Legg (Cabinet member for Customer Services)			
Caldecotte Site C Development Brief Report To consider authorising the undertaking of formal consultation on the draft Caldecotte Site C Development Brief.		Delegated Decisions Councillor Legg (Cabinet member for Customer Services)			
Street Lighting Programme	Estate Road LED Lantern Upgrade	Little Brickhill	Replace all lanterns to LED specification and columns as required	Q1 2020-21	Q4 2020-21 Prudential Borrowing



South Caldecotte

There has not been any progress of note since the previous meeting.

David Buckley - Senior Planning Officer (Development control) – West Team

T: 01908 25 3393

M:07775110877

E: david.buckley@milton-keynes.gov.uk

SEMK Planning Workshops

The SEMK design workshop involving representatives from the Parishes took place in January.

Andrew Turner

Senior Planning Officer | Development Plans

Attached to this report is the draft of the recent workshops. Neither Andrew Turner nor I

*have had a chance to review this properly, but please do share this with the Danesborough Forum and member councils for comment. **MKC would welcome comment on the draft report by 15 February**, but happy to extend this to accommodate parish meeting dates.*

Hyas have suggested that there may be benefit in holding another discussion to distil a vision and set of principles/objectives bespoke to the SEMK development. This is something we could do via your normal Danesborough Forum meetings, or we could organise a separate meeting under the guise of the 'SEMK Local Stakeholder Group' as we discussed at the end of the second workshop. This is what we've done for Milton Keynes East. Happy to be steered by yourself and the Danesborough Forum in this regard.

Andrew Turner- Senior Planning Officer | Development Plans

T: 01908 254892

M: 07775 110432

E: andrew.turner@milton-keynes.gov.uk

W: <https://www.milton-keynes.gov.uk/planning-and-building/>

Our chatbot can help with a range of planning questions why not click here to test her knowledge?

T: 01908 254892

M: 07775 110432

E: andrew.turner@milton-keynes.gov.uk

W: <https://www.milton-keynes.gov.uk/planning-and-building/>



The Traveller Liaison contact details

Any issues relating to the authorised travellers sites can be reported via the Neighbourhood team on 01908 252937. Further information and advice is available on the council website.

This Travellers Liaison post will sit within Neighbourhoods. The Head of Service, Heledd Williams has completed a round of recruitment, but unfortunately was unable to recruit. The post has been re-assessed and will go out to advert in February and contact details will be made available as soon as the post has been filled.

If residents wish to report unauthorised encampments, please use the council's on line report form or telephone: 01908 691691 or E-mail: customerservices@milton-keynes.gov.uk

so that the Environmental crime team can investigate and take any necessary action.

If someone feels they have been a victim of ASB and need advice, they can contact the ASB team: on 01908 252937 (option 4), email asb@milton-keynes.gov.uk or Thames Valley Police on 101 or report online.



Bus Services - The Head of Transport Steve Hayes has supplied the text below. Attached to this report is the list of all local bus contracts for information.

Contracts for all bus services subsidised by Milton Keynes Council end in October 2019. We are proposing to extend the contracts for all services to October 2020. During 2019/20 we will undertake a bus network review in partnership with commercial bus operators. This will consider all services; those that are commercial and those that are subsidised – either by the Council or from developer funding. We will assess how the network can be developed to meet aspirations for service improvements from both current users and new customers, whilst maintaining a network that is sustainable in the long term. This process will include full public and stakeholder consultation which will take place in the summer of 2019.

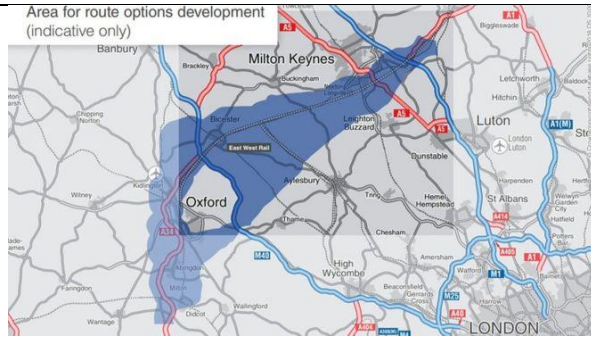
A list of all contracted services is attached. All other services in Milton Keynes operator commercially and operators are able to make changes to commercial services at any time, however through the new Quality Bus Partnership Arriva have committed to advise the Council before proposing any changes to commercial routes so that we can assess impacts and influence any proposals accordingly.

Arriva has asked again about the possibility of serving Woburn Sands as an extension of service 301 rather than service 300. You will recall I sought views on this before, but the only response I received was from Woburn Sands Town Council asking if it would then be necessary to change to get to Coachway, which it would. To me this was a worthwhile trade off as service 301 would provide a direct link to the Waitrose at Oakgrove that I thought would be of more use than the direct service to Coachway, but I may be wrong.

Stuart Simmonds - Public Transport Technical Lead

T: 01908 252011

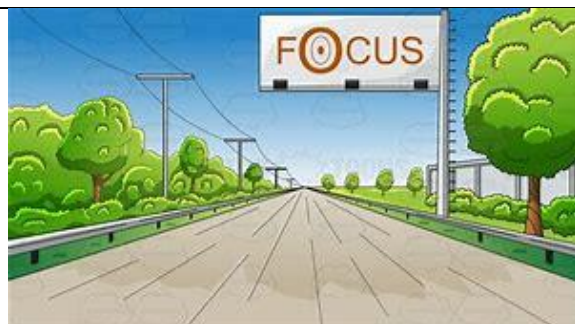
E: Stuart.Simmonds@milton-keynes.gov.uk



Expressway Timeline

Date	Event
Autumn 2017	Commitment by the Chancellor for construction to commence on the missing link before the end of the Road Investment Strategy (RIS2) in 2025
2018	Corridor announcement
Autumn 2019	Public consultation on route options*
2020	Preferred route announcement*
2025	Construction starts*
2030	New link opens to the public

*Indicative timetable, subject to preferred route options



East West Rail – Timeline

What is being proposed?

East West Rail Western Section will re-establish a passenger and freight railway between Oxford, Bedford, Milton Keynes, and Aylesbury. Phase 2 involves improving and reconstructing underused and disused sections of the former railway and represents a significant piece of infrastructure investment.

Why do we need to build this?

This scheme will enhance the rail network, create more journey opportunities with reduced journey times and better connections to the Great Western, West Coast and Midland Main Line services, avoiding the need to travel via London. It will reconnect major centres including, Aylesbury, Milton Keynes, Bedford, Bicester, Oxford.

What are the main benefits?

The East West Rail scheme will support economic growth through residential and commercial development along the line of route, boosting business growth and attracting new business and inward investment. The upgrade of the route will provide additional network capacity to accommodate growth in freight and passenger markets by connecting the Oxford to Bedford railway with the Great Western, West Coast and Midland Main Lines.

Who pays for it?

The project is funded by the Department for Transport and by a £45m contribution from the East West Rail Consortium.

What is the new EWR Company? And what is their role in delivering the project?

The East West Railway Company has been formed by the Secretary of State for Transport to optimise the delivery of the East West Railway. This team reviewed the East West Rail proposals and led a value engineering and programme delivery review that identified how the value and benefits from this project can be realised as quickly as is possible. The new EWR Company will run Britain's first integrated rail operation for decades and be a separate organisation to Network Rail. The Company is looking at how the EWR route can be delivered and maintained.

How many EWR2 trains will run and to what destinations?

In addition to existing train services, there will be new services from:

Oxford and Milton Keynes; stopping at Oxford Parkway, Bicester, Winslow and Bletchley. There will be two trains each way per hour.

Oxford and Bedford; stopping at Oxford Parkway, Bicester, Winslow, Bletchley, Woburn Sands and Ridgmont. There will be one train each way per hour.

Milton Keynes and Aylesbury with stops anticipated at Bletchley, Winslow, and Aylesbury Vale Parkway. There will be one train each way per hour.

When will construction start and trains begin to run?

Depending on funding, construction of the line between Bicester and Bletchley will start at the end of 2019 with trains operating from 2023.



School Place Planning: Forward View 2019 and Early Years Place Planning Forward View 2019

How many new schools will we need to open in the next five years to meet the demand from the significant developing expansion areas of Milton Keynes and the growth in our population? In the past 5 years, the pupil population has increased by almost 15% which represents an additional 5,000 pupils approximately. With the population projected to increase by over 38,000 in the next 10 years, the demand for school places is expected to continue.

The Education Sufficiency Team has recently updated the School Place Planning: Forward View 2019 and the Early Years Place Planning: Forward View 2019 documents. As a result of significant demographic growth and despite substantial capital investment in numerous schemes over each of the past few years, Milton Keynes will continue to show a need for additional early years and school places in the coming years, particularly in the secondary sector. The 'Forward View' allows all stakeholders to not only see the challenges we currently face in Milton Keynes in terms of school place planning, but also the opportunities that will be presented in the future.

This document is reviewed annually. Comments and feedback about this document are welcomed and can be sent to sufficiencyandaccess@milton-keynes.gov.uk.



5 Year Land Supply

In light of the recent Secretary of State (SoS) decision (December 2018) on the Section 78 appeal for planning permission for residential-led development at 'Land to the east of Newport Road and to the east and west of Cranfield Road at Woburn Sands', and the update to the National Planning Policy Framework (NPPF), the

Council have undertaken a review and update of their current Five Year Housing Land Supply (5YHLS) position.

2. This review has also taken account of the current position of Plan:MK, the Council's new local plan, which has been at examination since April 2018 and is still on course for adoption in March 2019.

3. The note attached to this report outlines the considerations the Council has made in reviewing the 5YHLS both in terms of housing requirement and supply, and provides an up-to-date position which will be used in decision making in advance of the adoption of Plan:MK.



Funding Opportunities

Milton Keynes Community Foundation Small Grants

MKCF's Small Grants Programme awards up to £1,500 for projects that make a positive impact in Milton Keynes and benefit local people. Find out more about eligibility and applying here. <http://www.mkcommunityfoundation.co.uk/grants/apply-grant/>

Thomas Wall Trust

The Thomas Wall Trust was established in 1920 for the "encouragement and assistance of educational work and social service." Today, the Trust continues to assist in these areas by providing grants to individuals and organisations. Grants of up to £1,000 are available for individuals and registered charities. To apply you should create an account on the website and request a form. Applications can be made at any time and will be considered at Trustee meetings held twice a year usually in July and November.

Read more. <https://www.thomaswalltrust.org.uk/>

UK Power Networks Power Partners

Grants are available up to £20,000 to not-for-profit organisations and community groups in the South East, East of England and London for initiatives that combat fuel poverty, improve the energy efficiency of community spaces or support people in vulnerable circumstances with their energy use.

Read more. <https://www.cse.org.uk/projects/view/1356>

**Claire Poulton**

Greensand Country has been inhabited since prehistoric times, although the earliest people to live here left little sign apart from a few flints and pots now buried under the ground. By the iron age people were building villages and hill forts, which you can still see in the landscape today. Romans built roads along the ridge at Old Warden, Caesar's Camp at Sandy and left scatters of pottery and beautiful glass at Shefford. Anglo Saxons founded towns and built the earliest churches. The Normans built manor houses and fortified castles, you can still explore one of their motte and bailey mounds at Cainhoe near Clophill.

In the middle ages the Greensand was a place of monasteries and deer parks. Cistercian monks lived at Old Warden and Gilbertine nuns in the priory at Chicksands. The soil was too thin to grow crops in most places so people farmed the woodlands, feeding pigs and growing timber. Rabbits were raised in huge warrens and peat was cut from the river valley at Flitton.

As the monasteries were closed by Henry VIII, the land passed over to the great families of England who built stately home and manor houses. Designers like Capability Brown and Humphrey Repton designed great parks like those at Woburn and Ampthill, making new lakes and streams, and wide open grassy spaces full of deer and grazing cattle.

In more recent times Greensand Country has been home to the armed forces, with the United States Air Force radio antenna at Chicksands.

Now over 1 million people live in and around the Greensand Country. The woods, parklands and miles of footpaths and bridleways make Greensand Country perfect for day outs on foot, bike or horseback. Organisations like the Greensand Trust, Wildlife Trusts, RSPB and Central Bedfordshire Council help look after the parks and nature reserves and maintain the footpaths and cycleways.

For more information about the Greensand Country Landscape Partnership, contact the team on

team@greensandcountry.com

01234 838774

The Old School,
Cardington,
Bedford,
Bedfordshire,
MK44 3SX.

**Clear Sacks**

The Council is confident with the changes in the delivery method for sacks that they are now on top of the requests that are coming through, if however you have properties that have experienced issues with receiving them prior to the changes last week then please let me know as I will be happy to arrange delivery of these myself.

Tony Brown - Waste Services Officer

Milton Keynes Council, Milton Keynes Waste Recovery Park, 9 Dickens Road, Old Wolverton, Milton Keynes, MK12 5QF

email: Tony.Brown@milton-keynes.gov.uk

Contacts

- For all Serco Landscape contract works enquiries, please contact Euan Darling or Mansour Moini - Please contact the helpline via the link below for new issues.
- For Tree (TPO TCA and Insurance related) enquiries contact Robert Widd.
- For Rights of Way, please contact Rosie Armstrong or James Walsh.
- For High Hedges enquiries and development related Tree issues please contact Stephen Narborough.
- For Planning, S106, Biodiversity and Ecology issues please contact Diane Evans or Phil Snell.
- For Flood Strategy please contact Ashish Patel.

To log a new issue or enquiry, go to: <https://my.milton-keynes.gov.uk/>

**MK Gallery are seeking volunteers**

MK Gallery reopens to the public on Saturday 16 March following a major development that will see double the exhibition space of the previous building, a new purpose-built

auditorium that will show independent film and host live events, and a new dedicated learning studio. This week, the Gallery launches details of volunteer opportunities that will be available when the building reopens.

The range of roles include gallery invigilators, ushers for film and events, learning support and marketing opportunities



Roadworks - The Highways Register Little Brickhill (Watling Street) TRAFFIC SIGNALS (Two-Way) - Installing new gas supply between 18/02/2019 and 22/02/2019

This new interactive service allows you to search for any planned works by area, road name, ward or parish, road type or reason. You can also see the current closures and those scheduled for the next two weeks.

This tool will help you check what is planned for a particular route or area so you can avoid any issues that may affect your journey. The information is updated every week.

Some works may be subject to changes due to unforeseen circumstances such as a road traffic collision or incident, weather conditions or operational reasons. Check the Highways View as an

Alternatively you can view the information shown in the Highways Register through a Google map based system on www.roadworks.org

Steven Shearer - Network Support Officer (Highways Services)

Direct: +44 (0)1908 253428

Switchboard: +44 (0)1908 691691

Email : Steven.Shearer2@milton-keynes.gov.uk

Visit Online : <http://www.milton-keynes.gov.uk/streets-transport-and-parking>



Alison Cook (pictured) is our new Head of Service at MK Council for Health and Safety. Alison was previously with the Health and Safety Executive, and has held senior positions in the waste industry.

Once Alison has settled in, she'll be reviewing risks for each service to prioritise where support is needed. I know you'll join me in welcoming Alison to MKC

David Hopkins / Victoria Hopkins / Alice Jenkins

MKC Senior Staff List Corporate Core - MKC Senior Team 2019

Chief Executive	Michael Bracey	01908 252200
------------------------	-----------------------	---------------------

Contact Us www.milton-keynes.gov.uk	Email: <i>firstname.surname@milton-keynes.gov.uk</i>	Tel: 01908 691691
---	--	--------------------------

Resources Corporate Director	Paul Simpson	01908 253374
Service Director: Legal and Democratic Services	Sharon Bridglalsingh	01908 252095
Service Director: Finance and Resources	Steve Richardson	01908 252756
Head of Revenues and Benefits	Robin Bates	07738 636820
Assistant Director: Audit & Risk Management	Duncan Wilkinson	01908 252089
Service Delivery Manager: ICT	Hazel Lewis	01908 254117
Capital Programme Director	Kamran Rashid	07792 540523
Head of HR	Musrat Zaman	01908 254278
Head of Customer Service, Digital and Transformation	Vacant from November 2017	
People Corporate Director	Michael Bracey	01908 258041
Director of Public Health (Shared with Bedford & Central Bedfordshire Councils)	Muriel Scott	01908 254241
Service Director: Children's Services	Mac Heath	01908 253121
Service Director: Adult Services	Victoria Collins	01908 253270

Assistant Director: Joint Commissioning	Mick Hancock	01908 252091
Place Corporate Director	Duncan Sharkey	01908 253411
Service Director: Housing & Regeneration	Michael Kelleher	01908 254167
Service Director: Public Realm Services	Tom Blackburne-Maze	01908 252213

Service Director: Planning, Culture and Infrastructure	Vacant from August 2017	
Head of Economy and Culture	Pam Gosal	01908 252192
Head of Placemaking	Neil Sainsbury	01908 252708
Head of Development Management	Brett Leahy	01908 252609
MKDP Chief Executive	Charles Macdonald charles.macdonald@mkdp.co.uk	01908 253899
Independent Chair	John Duggan john.duggan@mkdp.co.uk	01908 253405
Director of Strategy & Futures	Geoff Snelson	01908 252665

Acting Service Director: Policy, Insight & Communication s	Sarah Gonsalves	01908 252275
Head of Communications	Kellie Evans	01908 252413

