

## Unitary Councillor Report

**(Snippets) Report from Cllr David Hopkins, Cllr Victoria Hopkins & Cllr Alice Jenkins – Representing Danesborough & Walton at MK Council**



**November 2020 Combined Report**



**with planning for SEMK (SUE)**

Please see the link to CMIS for the agenda and papers for the Planning CAG workshop on Public Transport and Social Infrastructure (SE SUE MK) to be held on 4 November :

<https://milton-keynes.cmis.uk.com/milton-keynes/Calendar/tabid/70/ctl/ViewMeetingPublic/mid/397/Meeting/6776/Committee/1386/SelectedTab/Documents/Default.aspx> .

Sabina Kupczyk - Senior Planning Officer | Development Plans

E: [sabina.kupczyk@milton-keynes.gov.uk](mailto:sabina.kupczyk@milton-keynes.gov.uk)

T: 01908 25 3132

W: <https://www.milton-keynes.gov.uk/planning-and-building/>

Milton Keynes Council | Planning Service | Planning, Strategic Transport and Placemaking  
| Civic | 1 Saxon Gate East | Milton Keynes | MK9 3EJ



**With Wavendon** regarding Town and Country Planning Act 1990 (As Amended) Town and Country Planning (Development Management Procedure) Order 2015 - Application no: 20/02188/OUT

Proposal: Outline planning permission, with the matters of appearance and landscape reserved, for the demolition of existing storage shed and the erection of a 96 bedroom care home with parking and associated development (re-submission of application 20/00284/OUT)

At: Woburn Sands Emporium Newport Road Wavendon Milton Keynes MK17 8UF



## **MK Council official Response to Government White Paper on Planning**

... Milton Keynes is at the heart of the CaMkOx Arc, an area that will be internationally recognised for its delivery of growth and innovation. The way in which we plan for growth here in Milton Keynes will be key to the future success of the Arc and the ongoing success of the city. Milton Keynes has always been open to good growth and is actively exploring how best to grow the city and its environs over the long term to 2050. We have engaged with Government on how our 2050 vision and the Government's vision for the Arc can be best aligned to deliver infrastructure and growth to the betterment of our local communities.

It is in this context that I write to you with grave concerns about the planning reforms contained within the Planning White Paper 'Planning for the future'. Our main concerns are outlined below, supplemented with detailed responses appended to this letter. We recognise there are issues with the today's planning system, but we do not think the proposals put forward respond to these problems in an evidenced and appropriate way. Many of the proposals lack detail, but the general direction of travel they signal is worrying. Milton Keynes Council openly offers to assist Government in shaping the reform proposals as they evolve to ensure sustainable and high-quality growth occurs at pace in Milton Keynes and the wider Arc for the betterment of our local communities and the economy.

Our first and most significant concern is that the reforms outlined in the White Paper would fundamentally undermine the democratic nature of the planning process. This shift will deny or at least drastically curtail local peoples' right to participate in decisions that will have real-world effects upon the places they live, work and enjoy. The implicit justification is that democratic decision making and planning per se prevent or slow down good growth and housing delivery more specifically from occurring. This justification is unfounded. Milton Keynes, via local democratic decisions, has and will continue to have significant growth occurring. Whilst not without fault, local democracy and the planning system are not the causes of slow housing delivery. Delivery is almost entirely within the gift of developers, beyond the influence of local representatives, local communities or the planning system more generally.

The proposed reforms are also based upon a highly limited (and predominantly centralised) policy framework guiding development. The combination of highly constrained local decision making and a limited centralised policy framework has never been tested before and so is likely to give rise to unforeseen or unintended detrimental consequences with no built-in checks or recourse to remedy them. This has been and continues to be the case with the extension of permitted development rights into more substantial forms of development that has created poor living conditions for some of the most vulnerable in our society. It has taken Government years to address these consequences, despite them being so readily apparent. The White Paper reforms risk repeating this mistake.

With Milton Keynes being at the heart of the CaMkOx Arc, we are also gravely concerned that the reforms to cross-boundary working would leave no space or architecture for the regional or sub-regional planning that is necessary for delivering the CaMkOx Arc ambitions. Specifically, it is not clear how a spatial framework for the Arc would fit into the proposed planning regime. Clarity is needed on this crucial point, and we would welcome an opportunity to discuss it with Government.

The reforms would also extinguish any opportunity for creating a vision and wider placemaking for Milton Keynes through the local plan process. This is a valuable aspect of the current system, operating in the space between national policy and the more detailed local plan policies governing allocations and decision making. The White Paper proposal would effectively close this space. The ability of local communities to make positive use of this creative aspect in the planning process is currently hamstrung by national policy and legislation which tips the balance in the favour of developers and the development industry rather than local communities and public benefit. The White Paper reforms should seek to strengthen this creative aspect of the planning system rather than close it down. Associated with this is the resourcing of planning departments and the plan-making functions in particular. Unlike planning applications which are part-funded by fees, Local Plans are wholly resourced from a Council's budget and require significant investment. We urge Government to consider ways in which landowners and developers should help fund the preparation of Local Plans without introducing prejudice, bias or conflict of interest into the process.

As a unitary authority, we are also concerned by the complete lack of any proposals relating to waste and minerals planning. As reference in our more detailed responses accompanying this letter, waste and minerals planning cannot be delinked from wider town and country planning, due to competition for land and the relationship between the inputs to development and growth and the externalities that development growth create and need to be managed sustainably. To a slightly lesser extent the same applies to planning for jobs, retail and other development needs which are intrinsically linked to housing. The current planning system rightly considers these related matters iteratively at the local level where local knowledge and judgement and can be applied.

I look forward to opening up a conversation with Government about how to improve the planning system so it works with and for local communities in the public interest and delivers good growth.

Cllr Peter Marland.



**Information for Remembrance Day / Armistice Day event organisers**

I am aware that many of you are now planning your celebrations for Armistice Day so I wanted to share with you some information and guidance and provide information on the role of Thames Valley Police at these events. I am the designated Public Order & Public Safety Tactical Commander overseeing the Remembrance Day events across the Thames Valley.

Thames Valley Police recognises the significance of Armistice Day and we are very happy to support events and event organisers. It is our current intention to support local organisers to enable some form of COVID-19 secure public act of remembrance to take place, where it is safe to do so and where government regulations still permit it.

On 15th October 2020, the Government published guidance which sets out how Remembrance Sunday activities can take place in line with current COVID-19 restrictions and requirements in England. There are new legal requirements which apply to Remembrance Sunday events. The Government guidance can be found at:

[www.gov.uk/government/publications/local-authority-preparations-for-remembrance-sunday](http://www.gov.uk/government/publications/local-authority-preparations-for-remembrance-sunday)

It is important to consider other local restrictions which may apply in your area, when planning Remembrance events.

Who can organise a Remembrance Sunday event?

Local authorities in England can organise outdoor Remembrance Sunday events at a public war memorial or cenotaph, if they complete a COVID-19 risk assessment and take all reasonable measures to limit the risk of transmission of the virus. Organisers must also take into account the national guidance on outdoor events, including all cleaning and hygiene precautions.

Where necessary, organisers should engage with neighbouring businesses, transport operators and local transport authorities to assess any risks to the local area of increased visitors from other locations and apply additional mitigations if needed.

What can a Remembrance Sunday event involve?

**Local events should be adapted to make them as safe as possible.** They should be:

- short and focused on wreath laying, with a reduced march past or parade only if social distancing can be maintained
- take precautionary measures as set out in the performing arts guidance for any small, military bands
- not involve communal singing
- keep numbers to a minimum, focusing attendance on those wishing to lay wreaths (more information on who can attend below)
- take reasonable steps to minimise wider public viewing, encouraging the public to observe the rule of 6 when spectating

- observe social distancing at all times

Who can attend a Remembrance Sunday event?

Event organisers should keep numbers to a minimum. For the avoidance of doubt, the following people are legally permitted to attend events to commemorate Remembrance Sunday as participants. Attendees should observe social distancing at all times.

- people attending as part of their work (such as local councillors, local faith leaders, the local MP)
- people attending in a voluntary capacity on behalf of a recognised organisation
- members of the armed forces
- veterans of the armed forces, and/or their representatives or carers

Members of the public are legally permitted to stop and watch the event as spectators, but must observe the rule of 6 and social distancing rules. Event organisers should take reasonable steps to ensure the public attend alone, or do not mix in groups larger than 6 when in an outdoor public space (unless they are from one household/support bubble).

#### **Test and Trace:**

Event organisers must take reasonable steps to record the contact details of those attending (including those present in a working capacity, and members of the public who stop to spectate).

Event organisers must keep a temporary record of attendees for 21 days, in a way that is manageable, and assist NHS Test and Trace with requests for that data if needed. This could help contain clusters or outbreaks.

Those responsible for organising events, and businesses working on an event site, must also keep records of staff working patterns for a period of 21 days.

There is also an NHS App which can be used to log in attendees.

#### **Communal Worship:**

Remembrance Sunday services are traditionally part of communal worship. Places of worship remain open for communal worship services for as many people as can be safely accommodated.

Whilst engaging in an activity in the place of worship or surrounding grounds, all parties should adhere to social distancing guidelines at all times, even within a group of 6. This means people should be 2 metres apart or more than 1 metre apart as well as taking extra steps to stay safe (such as wearing face coverings) to reduce the risk of transmission.

Despite the changes this year, the Royal British Legion are encouraging people to ensure Remembrance Sunday is still marked appropriately by taking part in remote and socially distanced

Remembrance activity, whether that be watching the service on television or pausing for the Two Minute Silence in their home or on their doorsteps.

**Road closures:**

Each year, we receive requests for police officers and police community support officers to close roads to enable events to take place. Can I please take this opportunity to remind you that the police do not have legal powers to stop or control traffic for pre-planned events and may only implement road closures in an emergency situation.

Where Road Closure Orders (TPCA 1847) or Traffic Regulation Orders (RTRA 1984) are in place, the police still have no powers to close roads for pre-planned events.

Wherever possible, we will support your marshals however we cannot guarantee an officer's continued attendance as an emergency could call an officer away therefore we would ask that you make alternative arrangements for staffing of road closures, where this is required.

Where road closures are required your local Council and Highways authority will be able to assist you with details of accredited organisations who can assist with staffing road closures. In some areas the Royal British Legion or representatives has accredited their members to New Road and Street Works Act (NRSWA), guarding, signing and lighting module, giving them the powers to legally staff road closures themselves and negating the need for police attendance.

I have detailed the process to seek a road closure below:

- 1) Complete Road Closure Application – available local council highways department
- 2) Complete a Traffic Management Plan to accompany the application
- 3) Ensure a competent person is assigned to close a road.
- 4) Display signage at each of the roads being closed
- 5) You MUST have public liability insurance to be able to conduct the closure. If the council agree your application then during the times you have applied for the closure the responsibility for your staff and members of the public falls to you to cover.

If you have any questions regarding the above then please contact your local highways authority.

I reassure you that large numbers of Remembrance events within the Thames Valley Police area already run with either no police in attendance or minimal support.

If invited, we will of course still provide a neighbourhood police presence to support your parade (emergencies permitting) and we still take great pride in laying wreaths and paying respects at many of the services. If you have any concerns or would like any further advice please contact your local neighbourhood policing team or the TVP Operations Planning Department.

**Superintendent John Donachy**  
**Public Order & Public Safety Tactical Commander**

Force Training Centre  
Sulhamstead  
Nr Reading  
Berkshire, RG7 4DX

Tel: 0118 9325790

[www.thamesvalley.police.uk](http://www.thamesvalley.police.uk)



**Road Safety Update**

Here is some information about the different road safety campaigns or processes so here's the latest update from the Highways team at MK Council:

**Road Safety Statutory Duty**

MK Council, like many other traffic authorities, has a statutory duty for road safety under the Road Traffic Act 1988, Section 39. MKC investigate and implement an annual programme of engineering accident remedial measures, which is funded by the local authority. These measures are aimed at locations where there are a high number of reported injury accidents that meets an accepted criteria for intervention. The research they do relates to the road casualty statistics collated from information collected by Police officers on road collisions. This dataset is known as Stats 19, after the number of the form that Police officers fill in. Stats 19 gives us a wealth of information on the types of collisions on our roads and allows us to establish casualty and behaviour trends over time. These are reported personal injury accidents and not damage only or near misses. The Council funding for this work is very limited and it is therefore targeted towards those locations that will achieve the greatest degree of accident and casualty reduction. At present MKC is short staffed and is currently recruiting for a Road Safety Senior Engineer but in the meantime they are redeploying staff to carry out the analysis of the data and the existing management are dealing with road safety concerns raised by parish, town and ward councillors and members of the public.

Although any accident is a tragedy, close examination of the three year collision history for the length of road or junction of concern sometimes shows a relatively low accident record compared to other sites.

The other issue to bear in mind is that we do not rely on speed data from Speed Indication Devices because in most cases they need to be calibrated and maintained by the owners of the

equipment for them to work within stated tolerances. As highway authority MKC would carry out speed count surveys.

If speed data shows general speed limit compliance and the collision history also shows no discernible trend then MKC are not likely to take forward any further actions although we will continue to monitor the situation. It is also important to be aware that many communities object to traffic calming features when they are proposed by the local authority because although they are effective they also come with a number of disadvantages including noise and vibrations.

### **Speed Indicating Devices (SIDs)**

SIDs are different to the Community Speed Watch devices which are hand held speed guns – historically MKC led a programme, but in 2012 we purchased some SIDs to be used by parish councils. This was a one-off and some of the kits are now at the end of their working life. Any parish who wishes to purchase new SIDs, can apply via the Community Infrastructure Fund although any ongoing maintenance must be funded by the parish or town council. We will soon be accepting online applications in 21/22 for the forthcoming CIF programme for 22/23.

Some parish and town councils send their speed data into us, this should be forwarded to [highway.adoptions@milton-keynes.gov.uk](mailto:highway.adoptions@milton-keynes.gov.uk) where it is recorded on the Council database. At this stage the information is not reviewed. The parish or town councils will also forward the data to the police if there are concerns about speeding for the police to take appropriate enforcement action in the first instance. This is most often by the deployment of mobile speed enforcement vans, the police liaise with highways to erect appropriate signage so that mobile speed enforcement can take place if they are concerned. Should the problems persist the police, parish and town councils liaise with highways to raise any issues. There is also the option of the parish or town council to get involved in a community speed watch scheme.

The other issue to bear in mind is that we do not rely on speed data from Speed Indication Devices because in most cases they need to be calibrated and maintained by the owners of the equipment for them to work within stated tolerances. As highway authority we would carry out speed count surveys.

### **Community SpeedWatch**

Community SpeedWatch (CSW) is an initiative organised by Thames Valley Police, operated by local parish and town councils and supported by MKC. TVP have terms and conditions, they do a site risk assessment and an agreement has to be completed between the local parish/town council and TVP. Once the local council is up and running with its volunteers, a log of offending vehicles is completed and either sent to TVP for processing or local parish/town council volunteers input into the Police National Computer.

Parish or Town Councils act as 'hubs' sharing the equipment between themselves at present.

Fixed Speed Cameras With regards to installing fixed speed camera, Thames Valley Police consider this as a last resort after every other measure has been exhausted. The measures would have to have already included consideration of engineering measures such as road layout, road humps, chicanes etc and Community Speedwatch.

---





**Milton  
Keynes**

**Freephone 0808 278 7991**

As of Monday 26th October 2020, calls to Citizens Advice in Milton Keynes are now free of charge. To do this, we have had to change the local 01908 604475 number to the one displayed at the top of this page.

We have arranged for an automated message to remain on our old number, and this prompts callers to hang up and redial the new 0808 number.



**Our helpline is now open between:**

**Mon – Fri 09:00am - 5:00pm 0808 278 7991**

We also have designated helplines for

- Universal Credit 0800 144 8 444 (Freephone)
- Vulnerable Adults 01908 545191 (calls charged at local rate)

These numbers remain unchanged.

Please share this update with colleagues and connections who may want to contact us for advice or who work with people that might need our help. We're also collaborating with other local citizens advice offices to answer each other's calls when lines are at their busiest. This means more calls will be answered overall and people in Milton Keynes will receive support at times when our office would not normally be open.

If you have any questions please get in touch at [director@mkcab.org.uk](mailto:director@mkcab.org.uk)

---

**We are writing to invite you to our Annual Community Rail Conference 2020.**



**with West Midlands Trains**

Our conference this year is a Webinar, and the title is 'Restoring Confidence in Rail', with local restrictions under constant review, our aim is to take the long term view, celebrate what has been achieved despite the pandemic and look to the future.

All five Parishes

The content of the event will cover efforts towards rail recovery, the work with and by our communities throughout the Covid 19 crisis and the regional focus on localism and economic and social revival.

We welcome a national audience to our regional conference to look at the future of rail, the power of our communities and the revival of our industry and do hope that you can join us and please feel free to forward this invitation to any of your contacts who you think might be interested in this event.

**Date: Friday 13 November 2020** - Timings: 09:45 Registration Opens - Webinar 10:00 - 12:00

Click here to register <https://www.bigmarker.com/ba-events/Restoring-Confidence-in-Rail-Conference>

Vicky Cropper-Clarke & Fay Easton- Heads of Stakeholder & Community  
London Northwestern Railway - West Midlands Railway

Traffic Issues November						
Area	Road name	Start Date	Start Time	End Date	Finish Time	Type
BOW BRICKHILL	Greenways	09/11/20	24 hours	11/11/20	24 hours	TRAFFIC SIGNALS (Multi-Way)
BOW BRICKHILL	Station Road	09/11/20	24 hours	11/11/20	24 hours	TRAFFIC SIGNALS (Multi-Way)
WAVENDON	A421	16/05/20	24 hours	16/11/21	24 hours	ROAD CLOSURE
WAVENDON	STOCKWELL LANE	20/07/20	24 hours	06/12/20	24 hours	ROAD CLOSURE
WAVENDON	Newport Road	16/11/20	24 hours	27/11/20	24 hours	LANE CLOSURE
BROWNS WOOD	ELGAR GROVE	02/11/20	24 hours	06/11/20	24 hours	ROAD CLOSURE




## New Waste Collection Trial underway in some parts of MK



Grey wheeled bin collected weekly for residual waste



A wheeled bin with a blue lid plastic, metals and glass



A wheeled bin with a red lid for paper and card



A battery container that hangs on the side of the bin

The last formal consultation on waste services took place in 2005. The procurement of a new service for 2023, provides an opportunity to understand what is important for the delivery of waste and recycling services to the residents of Milton Keynes.

A formal consultation on Waste and Recycling Collection will launch from Monday 2 November 2020 and will last for 12 weeks. Responses from the consultation will help make the decision on the future of the waste services from 2023. This will be supplemented by data and feedback from the Waste Collection Pilot which started on Monday 26 October.

The impact of Covid19 provided an opportunity to review how we communicate. We need your help to promote the consultation to ensure that everyone has a chance to have their say.

The consultation will be live on the MK consultation portal from the 2 November;

<https://www.milton-keynes.gov.uk/consultations/609>

- This video clip with subtitles explains the consultation: <https://youtu.be/TLabCRPtqoQ>
- An audio clip is available to explain the consultation.
- Attached is a poster to display or share to promote the consultation.
- And here is the October media release: <https://www.milton-keynes.gov.uk/pressreleases/2020/oct/have-your-say-on-the-future-of-waste-collections-in-mk>

•

What we will be doing;

- Resident and community groups – direct contact by email.
- Provide hard copies of the consultation available with Freepost – offer to parish, resident and community groups. Available on request to individuals.
- Website, media release and regular social media reminders.
- Direct contact with chairs and representative groups.

All five Parishes

We are happy to accommodate requests to attend meetings virtually to talk about the consultation.

Please let me know if you have any queries, or are aware of any additional community groups that I could contact directly. An email with this information will be sent to all parish councils.

Penny Fletcher  
Community Engagement Manager  
Environment and Waste

Direct: +44 (0)1908 258063



**with Walton .... THE COUNCIL OF THE BOROUGH OF MILTON KEYNES  
(A4146 BLETCHAM WAY (H10), CALDECOTTE) (PROHIBITION OF U-TURN) ORDER 2020**

Documents are available regarding :

- Notice of Proposal – served on 29th October 2020
- Proposed Traffic Regulation Order and associated map
- Consultation Drawing

The Council's reason for introducing the prohibition of u-turn restriction comes as a result of concerns raised by residents and councillors that there is a high volume of vehicles making u-turn manoeuvres at this junction which have resulted in several near misses. As a result of these concerns, MK Council installed cameras on the junction to monitor vehicular movements. The video footage captured by the camera clearly shows that there is in fact a high volume of u-turn manoeuvres being carried out at this location, several of which resulted in near misses.

The Council considers it expedient to introduce the u-turn ban restriction:

- to facilitate the expeditious, convenient and safe movement of motorists at the junction of Bletcham Way and Monellan Grove;
- for avoiding danger to persons using the road or for preventing the likelihood of any such danger arising.

The Council is now carrying out statutory consultation on the proposed u-turn and invites you to comment.

As part of the consultation exercise we have uploaded the consultation onto the Milton Keynes Council website at <https://www.milton-keynes.gov.uk/consultations/608> .

The closing date for the statutory consultation exercise is 19th November 2020. Please send any comments you may have on the above proposals by the closing date above.

Paul Harrison - Senior Traffic Regulations Officer

T: 01908 254604 (This number is currently unavailable)

M: 07745128206

E: [Paul.harrison@milton-keynes.gov.uk](mailto:Paul.harrison@milton-keynes.gov.uk)



**MK FORUM**

**MK Campaigners Slam Planning 'Reforms'**  
**Issued by MK Forum, Xplain and RoRE 19/10/20**

Enquiries to Tim Skelton (Chair, MK Forum) 07985 100246 or  
Linda Inoki (Chair, Xplain) 07704 582393 or David Lee (Secretary, RoRE) 07736 227260

"If adopted, the next twenty years could spell the ruin of Milton Keynes."

Local campaign groups have slammed government plans to rip up the planning system, warning that its so-called 'reforms' will spell the end of MK's green open spaces, turn the landscaped grid roads into choked city streets, and cut local people out of the process.

The city's civic society, MK Forum, and the Fred Roche Foundation have teamed up with campaign groups Xplain and Residents of Renewal Estates (RoRE) to warn residents about threats from the latest government White Paper. If adopted, it would see most of New Town Milton Keynes designated as a 'renewal area', meaning new developments would be given automatic planning permission, without public consultation, while planning 'rules' would be set by national bodies rather than locally.

In a rare alignment of all political parties, Milton Keynes Council has also unanimously voted to condemn these plans. At a recent meeting, Councillors warned that it would put the fate of MK in the hands of a few big house-builders and make affordable homes even harder to find.

"The White Paper aims to streamline the planning process to deliver more homes," says RoRE's David Lee. "But when you drill down there are many alarming aspects. Most of MK would be targeted for infill of residential areas, giving developers the upper hand in building on our open green spaces."

Linda Inoki, chair of Xplain, says "The people of MK have had many debates with the Council and developers, but it's always been about keeping MK special. Localism has been crucial to raising standards in recent years, but it's about to be demolished. Guaranteeing planning consent for infill housing means that protest will be futile. Standards and the

quality of life will drop, while corporate profits rise. Unless people oppose this centralised power grab the next twenty years could spell the ruin of Milton Keynes.”

Tim Skelton, chair of MK Forum, said "Events of the past few months have shown, more than ever, the value that the residents of Milton Keynes place upon our open spaces. We are concerned that the White Paper offers too little protection for these treasured parts of our city and that they could become an easy target for development”.

Campaigners are urging concerned residents to write to their MPs and the Government. Anyone can respond to the Government’s consultation on the new White Paper by going to [www.gov.uk/government/consultations/planning-for-the-future](http://www.gov.uk/government/consultations/planning-for-the-future) or emailing [planningforthefuture@communities.gov.uk](mailto:planningforthefuture@communities.gov.uk) .

A template for a letter of objection can be found on Xplain’s website, [www.xplain.org.uk](http://www.xplain.org.uk)



## Planning Applications in Danesborough & Walton

- **Town and Country Planning Act 1990 (As Amended)**

**Town and Country Planning (Development Management Procedure) Order 2015**

**Application no: 20/02682/FUL**

**Proposal: Erection of 12no. dwellings with associated parking and creation of access road.**

**At: Frosts Landscape Construction Newport Road Wavendon Milton Keynes MK17 8UZ**

- **Town and Country Planning Act 1990 (As Amended)**

**Town and Country Planning (Development Management Procedure) Order 2015**

**Application no: 20/02735/FUL**

**Proposal: Relocation of boundary fence and gate along the western boundary (re-submission of 20/01839/FUL)**

**At: 10 Devereux Court Glebe Farm Wavendon Milton Keynes MK17 8FS**

- **Town and Country Planning Act 1990 (As Amended)**

**Town and Country Planning (Development Management Procedure) Order 2015**

**Application no: 20/02685/CLUP**

**Proposal: Certificate of Lawfulness for the proposed rear elevation single storey extension. Garage front and rear doors removed and replaced with windows.**

**At: 9 Venetian Court Wavendon Gate Milton Keynes MK7 7ST**

- **Town and Country Planning Act 1990 (As Amended)**

**Town and Country Planning (Development Management Procedure) Order 2015**

**Application no: 20/02698/DISCON**

**Proposal: Details submitted pursuant to discharge conditions 5 (Biodiversity Enhancement Scheme \_ Management Plan) \_ 6 (Sustainable Drainage Strategy and detailed design) attached to planning application 20/01406/FUL**

**At: Long Acre 38 Cranfield Road Wavendon Milton Keynes MK17 8AS**

- **Town and Country Planning Act 1990 (As Amended)**

**Town and Country Planning (Development Management Procedure) Order 2015**

**Application no: 20/02680/DISCON**

All five Parishes

**Proposal:** Details submitted pursuant to discharge condition 10 (EV Charging Plan) attached to planning application 20/00151/FUL

**At:** Land Behind 60 Walton Road Wavendon

- Town and Country Planning Act 1990 (As Amended)

Town and Country Planning (Development Management Procedure) Order 2015

Application no: 20/02466/FUL

**Proposal:** The demolition of an existing tennis court and the erection of 2 detached dwellings with garages, external parking and associated works.

**At:** Wavendon Cottage 4 Cross End Wavendon Milton Keynes MK17 8AQ

- Town and Country Planning Act 1990 (As Amended)

Town and Country Planning (Development Management Procedure) Order 2015

Application no: 20/02651/CONS

**Proposal:** Amendments to 20/01634/CONS - Demolition of existing 1 storey building and erection of 2.5 storey classic car showroom (Central Bedfordshire Council application CB/20/01625/FULL)

**At:** 65 Station Road Woburn Sands Milton Keynes MK17 8SH

- TOWN AND COUNTRY PLANNING ACT 1990 (AS AMENDED)

APPEAL BY Mr David Wright

AGAINST REFUSAL FOR

Change of use from a single dwelling house to a House in Multiple Occupation (HMO) for 8 persons

AT 2 Farjeon Court, Old Farm Park, Milton Keynes, MK7 8RE,

APPEAL START DATE: 14th October 2020

- Town and Country Planning Act 1990 (As Amended)

Town and Country Planning (Development Management Procedure) Order 2015

Application no: 20/02486/FUL

**Proposal:** Two storey detached dwelling

**At:** High Barn Woburn Road Little Brickhill Milton Keynes MK17 9NA

- Town and Country Planning Act 1990 (As Amended)

Town and Country Planning (Development Management Procedure) Order 2015

Application no: 20/02188/OUT

**Proposal:** Outline planning permission, with the matters of appearance and landscape reserved, for the demolition of existing storage shed and the erection of a 96 bedroom care home with parking and associated development (re-submission of application 20/00284/OUT)

**At:** Woburn Sands Emporium Newport Road Wavendon Milton Keynes MK17 8UF



**Community Champions in Dnesborough & Walton wanted to share key COVID-19 information**



We're calling on you to help reach friends, family, neighbours, colleagues and thousands of other local people with trusted information and advice related to COVID-19.

Throughout the pandemic, the Community, Town and Parish Councils have been keeping residents informed and up to date with local information and the latest government and health advice. In light of increasing infection rates and changing restrictions, we're keen that as many residents as possible are kept up to date with the latest advice and information.

But we know we won't reach everyone, so we're calling for people to sign up to become Community Champions to help us reach more of the local community.

Many people have wanted to help others throughout the pandemic but were unsure how to go about it. Being a Community Champion is an easy way to make a massive difference, by sharing the latest information and advice with friends and families. This could be via local Facebook groups, WhatsApp groups, social organisations and clubs that people are part of.

Volunteers will be provided with the latest information to share at the click of a button – it's that simple. It won't take up a huge amount of time, but it could really help make a massive difference in helping to keep our families, friends and communities safe.



### **Travellers**

There have recently been Travellers camped on land at Walnut Tree and then at Wavendon Gate.

Should Travellers appear on or close to your land or on a site close to you please contact Pete Roberts - Team Leader (Environmental Crime Unit – MK Council)

T: 01908 254569

E: [Pete.roberts@milton-keynes.gov.uk](mailto:Pete.roberts@milton-keynes.gov.uk)

Should you need to contact Thames valley Police our local Police Sergeant (Sgt Thomas Neilson) is the best contact for initial advice and guidance

Police action and community impact always is assessed and as I hope readers will be aware there is legislation and policies in place that both the police and local council have to adhere to before they look at positive steps to bring this to a conclusion. First aspect is identifying the landowner who has to act. They identify the land as belonging to them and then they make the request for the encampment to leave. This will then usually follow a sec 77 notice being served requesting the encampment to leave. If this is not adhered to



then they would look to seek a court order for eviction. In most cases this works however on occasions the police do have Sec 61 powers:

They require set criteria in law that we all have to follow:

The list is not too exhaustive however I will pick out pertinent points:

- \* 2 or more vehicles
- \* Damage caused to gain access to the land (such as padlocks being broken, fence posts removed from the ground or fencing damaged etc)
- \* Aggravating factors present such
  - Local amenities are deprived to communities
  - Local disruption to the economy
  - Significant disruption to the local community or environment
  - There is a danger to life
  - There is a need to take a preventative course of action

To assess all of the above when a group move onto a new site is very difficult and TVP and the Council struggle a bit at weekends when it comes to who is the landowner and also being able to get a landowner out to the site to confirm it is their land and make the official request to leave.

# COVID-19 Snapshot

As of 28<sup>th</sup> October 2020 (data reported up to 25<sup>th</sup> October 2020)

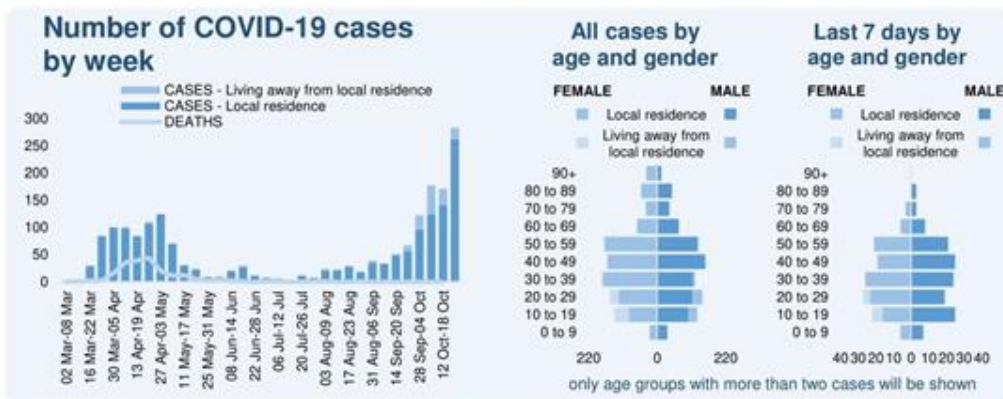


## Population 269,457



Direction of travel compares current snapshot against previous snapshot

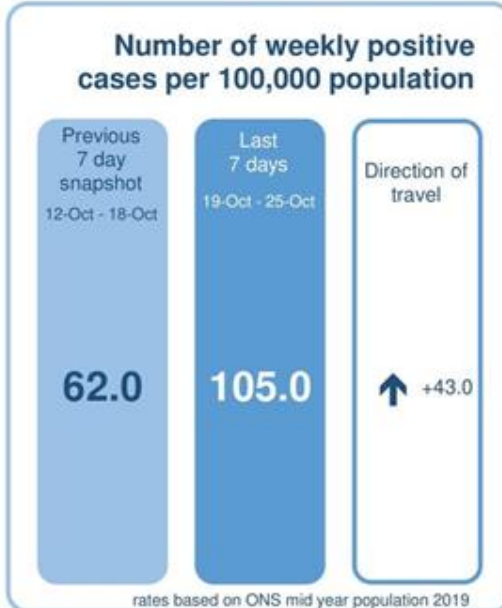
key: ↑ Increasing ● no change ↓ decreasing



### Most affected wards in the last 7 days

Ward	Number of cases
Newport Pagnell South	30
Newport Pagnell North & Hanslope	28
Broughton	25
Stantonbury	19
Monkston	18
Woughton & Fishermead	18
Danesborough & Walton	17
Wolverton	16
Shenley Brook End	15
Bletchley East	14
Central Milton Keynes	14
Tattenhoe	14
Campbell Park & Old Woughton	11
Olney	11
Bletchley Park	10
Bletchley West	9
Loughton & Shenley	9
Stony Stratford	3

only wards with more than two cases will be shown



(current snapshot against previous snapshot)

Please note: numbers in recent days may rise, reflecting diagnostic and reporting turnaround time. All detail within this report is the latest data available prior to publishing (28/10/2020).

Week-to-week comparisons are based on the data available at the time each snapshot was published.

Produced by: Bedford Borough Council, Central Bedfordshire Council and Milton Keynes Council Public Health Evidence and Intelligence Team - J Philips.

Source: Public Health England (PHE), Office for National Statistics (ONS).



**With Planning Officers**

**OFFICER CONTACT DETAILS**

**East Team**

<b>07795 475593</b>	<b>Paul Keen</b>	<b>Team Leader</b>
07795 475584	Katy Lycett	Senior Planning Officer
07795 475586	Chris Walton	Senior Planning Officer
07392 133920	Lakeisha Peacock	Senior Planning Officer
07795 475597	Carrie Chan	Planning Officer
07775 111052	Tamlin Barton	Planning Officer
07717 148931	Sundas Shaban	Planning Officer

**Development Services**

01908 254794	Tom Halsey	Development Services Officer
01908 253052	Sonia James	Development Services Officer

**Enforcement Team**

01908 254777	Gary Dunne	Senior Enforcement Officer
01908 253573	Zehn Sajid	Enforcement Officer
07972 769351	Colins Mwapaura	Enforcement Officer

**West Team**

<b>07384 241816</b>	<b>Elizabeth Verdegem</b>	<b>Team Leader</b>
07775 110877	David Buckley	Senior Planning Officer
07795 475594	Jeremy Lee	Senior Planning Officer
07795 475592	Richard Edgington	Senior Planning Officer
07795 475595	Charlotte Ashby	Planning Officer
07775 111209	Joe Read	Planning Officer
01908 254643	Rachel Larnar	Planning Officer



As I'm sure you are aware the Litter Hot Spot crew that was introduced last year from the Getting the Basics Right funding, is now a permanent resource so I thought I'd drop you a line to see if you want to change any of the hot spots you asked to be in the schedule last year. If so, please let me know which hot spot you wish to change and details of the new one so I can let Serco know who will update their schedule.

On another note, we have used some signage on litter bins for our city-wide COVID-19 campaign to try to encourage people to use litter bins and also to take their litter home if a bin is full. We are looking to order some more of these signs to use across all areas, so if you have any litter bins you would like a new signs on, please let me know the bin location and which sign you prefer. Serco will fit the signs to the bins.

Tina Guile - Project Manager - T: 07702 816716

E: [tina.guile@milton-keynes.gov.uk](mailto:tina.guile@milton-keynes.gov.uk)

All five Parishes



How can we help?

Contact your local ward councillors for Danesborough & Walton ...

[David.hopkins@milton-keynes.gov.uk](mailto:David.hopkins@milton-keynes.gov.uk)

[Victoria.hopkins@milton-keynes.gov.uk](mailto:Victoria.hopkins@milton-keynes.gov.uk)

[Alice.jenkins@milton-keynes.gov.uk](mailto:Alice.jenkins@milton-keynes.gov.uk)



With the Marston Vale Community Rail Partnership



Twitter followers up to 1,555

2- 3 posts per week – variety of stories

Instagram account being relaunched - @marstonvalecrp

News section on Marston Vale CRP website regularly updated & new pages being developed including 'About Us (with links to partners), Station Friends and Small Business Support (listing of small businesses near each station)

- Exploration of Bee Friendly planters at stations – site meeting being arranged

Some good news. £36K has been allocated for 'station improvements' at Woburn Sands including

1. A second ticket vending machine for Bletchley bound customers
2. CCTV coverage for the cycle parking
3. Improved (weather proof) shelter for Bedford bound customers
4. Water butts for use of the Friends of WS Railway Station

The Friends of WS Station have been nominated for a community award

We also have new contacts at Network Rail – Nick Holloway (who actually grew up in Woburn Sands)

New contacts at EWR - Stewart Edwards (Community Engagement Officer) and Will Gallagher

Network Rail and MK Council Highways are meeting on 9 November to 'devise a solution to the School Crossing issues'

*Stephen Sleight - Transport Team Leader (Rail) | Marston Vale Community Rail Partnership Officer*

Bedfordshire Rural Communities Charity

T: (01234) 832645

F: (01234) 838149

E: [stephens@bedsrcc.org.uk](mailto:stephens@bedsrcc.org.uk)

The Old School, Cardington, Bedford, Bedfordshire, MK44 3SX.



Many people in Milton Keynes have to choose between heating and eating during the winter months. With the Covid-19 pandemic, this season will be even more challenging. Many will be spending more time at home as they self-isolate, which will mean even higher heating bills than normal, and more time feeling isolated and lonely.

<https://www.mkcommunityfoundation.co.uk/news-events/milton-keynes-community-foundation-news/2020/surviving-winter-campaign>

All five Parishes



## S106 Calculator

Education		Contribution	
Total Early Years			
Primary pupils			
Secondary pupils			
Post 16 pupils			
Leisure Recreation & Sports	Provision Cost	Maintenance Cost	
Playing Fields			
Local Play			
Neighbourhood Play			
Community Hall			
Local Parks			
District Parks			
Swimming Pool			
Allotments			
Sports Hall			
Social Infrastructure for a development scheme on allocated proposed employment land			Contribution
Library			
Adult continuing education			
Crematorium / Burial Grounds			
Museums & Archives			
Health Facilities			
Waste Management			
Waste Receptacles			
Social Care – Day Care			
Social Care – Older Persons Housing			
Emergency Services			
Voluntary Sector			
University for Milton Keynes			
Milton Keynes College			
Inward Investment			
Public Art & Culture – 1% (estimated)			
Carbon neutrality (estimated)			
Transport		Contribution	
Highways			
Public Transport			
Pedestrian / Cycle			
Travel Planning			

## S106 Planning Obligation Response Template

### Planning Application

Application No:		Proposal:	
-----------------	--	-----------	--

### Consultee Information

Organisation		Name	
Date Completed		Your Ref:	

### Contribution Information

Theme / Topic of contribution A separate table should be completed for each separate contribution	
Contribution Amount	
Purpose of contribution / Where Spent (define specific project/s)  <b>*Regulation 122 of CIL</b> (a) necessary to make development acceptable in planning terms: (b) directly related to the development: and © fairly and reasonably related in scale and kind to the development	
Justification / evidence basis	
Timing of payment / trigger (if appropriate)	
Other comments	



**Roadworks** - The new interactive service allows you to search for any planned works by area, road name, ward or parish, road type or reason. You can also see the current closures and those scheduled for the next two weeks.

Location	Street	From	To	Type





**David Hopkins / Victoria Hopkins / Alice Jenkins**

**MKC Senior Staff List Corporate Core - MKC Senior Team  
2020**

**MK Council Senior Officers**

<b>Chief Executive</b>	<b>Michael Bracey</b>	<b>01908 252200</b>
------------------------	-----------------------	---------------------

<b>Deputy Chief Executive</b>	<b>Tracey Aldworth</b>	<b>01908 253888</b>
-------------------------------	------------------------	---------------------

<b>Contact Us</b> <a href="http://www.milton-keynes.gov.uk">www.milton-keynes.gov.uk</a>	<b>Email:</b> firstname.surname@milton-keynes.gov.uk	<b>Tel: 01908 691691</b>
---	---	--------------------------

<b>Resources Corporate Director</b>	<b>Steve Richardson</b>	<b>01908 253374</b>
<b>Service Director: Legal and Democratic Services</b>	<b>Sharon Bridglalsingh</b>	<b>01908 252095</b>
<b>Service Director: Finance and Resources</b>	<b>Steve Richardson</b>	<b>01908 253374</b>
<b>Head of Revenues and Benefits</b>	<b>Robin Bates</b>	<b>07738 636820</b>
<b>Chief Internal Auditor Audit &amp; Risk Management</b>	<b>Duncan Wilkinson</b>	<b>01908 252089</b>

All five Parishes

<b>Service Delivery Manager: ICT</b>	<b>Hazel Lewis</b>	<b>01908 254117</b>
<b>Capital Programme Director</b>	<b>Kamran Rashid</b>	<b>07792 540523</b>
<b>Head of HR</b>	<b>Musrat Zaman</b>	<b>01908 254278</b>
<b>Director Housing and Regeneration</b>	<b>Michael Kelleher</b>	<b>01908 254167</b>
<b>Head of Customer Service, Digital and Transformation</b>	<b>Tracey Tudor</b>	<b>01908 257979</b>
<b>Director Adult Services</b>	<b>Director Adult Services</b>	<b>01908 253508</b>
<b>Director of Public Health (Shared with Bedford &amp; Central Bedfordshire Councils)</b>	<b>Muriel Scott</b>	<b>01908 252388</b>
<b>Service Director: Children's Services</b>	<b>Mac Heath</b>	<b>01908 253121</b>
<b>Service Director: Adult Services</b>	<b>Victoria Collins</b>	<b>01908 253270</b>
<b>Assistant Director: Joint Commissioning</b>	<b>Mick Hancock</b>	<b>01908 252091</b>
<b>Place Corporate Director</b>	<b>Duncan Sharkey</b>	<b>01908 253411</b>
<b>Service Director: Housing &amp; Regeneration</b>	<b>Michael Kelleher</b>	<b>01908 254167</b>
<b>Service Director: Environment &amp; Property</b>	<b>Stuart Proffitt</b>	<b>01908 254692</b>

<b>Service Director: Growth, Economy &amp; Culture</b>	<b>Tracy Darke</b>	<b>01908252394</b>
<b>Head of Placemaking</b>	<b>Neil Sainsbury</b>	<b>01908 252708</b>
<b>Head of Development Management</b>	<b>Jonathan Palmer</b>	<b>01908 253026</b>
<b>MKDP</b>	<b>Charles Macdonald</b>	<b>01908 253899</b>

All five Parishes

<b>Chief Executive</b>	<b>charles.macdonald@mkdp.co.uk</b>	
<b>Independent Chair</b>		<b>01908 253405</b>
<b>Director of Strategy &amp; Futures</b>	<b>Geoff Snelson</b>	<b>01908 252665</b>

<b>Acting Service Director: Policy, Insight &amp; Communications</b>	<b>Sarah Gonsalves</b>	<b>01908 252275</b>
<b>Head of Communications</b>	<b>Kellie Evans</b>	<b>01908 252413</b>
<b>Environment &amp; Property</b>		
<b>Head of Regulatory Services</b>	<b>Neil Allen</b>	<b>01908 252365</b>
<b>Head of Health &amp; Safety</b>	<b>Alison Cook</b>	<b>01908 502935</b>
<b>Head of Environment &amp; Waste</b>	<b>Nicholas Hannon</b>	<b>02908 252577</b>
<b>Head of Transport</b>	<b>Steve Hayes</b>	<b>01908 253281</b>
<b>Head of Property &amp; Facilities</b>	<b>Bee Lewis</b>	<b>01908 252452</b>
<b>Head of Highways</b>	<b>Davina Millership</b>	<b>01908 252994</b>
<b>Growth Economy &amp; Culture</b>		
<b>Head of Placemaking</b>	<b>Neil Sainsbury</b>	<b>01908 252708</b>
<b>Strategy &amp; Futures</b>		
<b>Policy Manager</b>	<b>Sophie Lloyd</b>	<b>01908 253208</b>
<b>Head of Transport Innovation</b>	<b>Brian Matthews</b>	<b>01908 252064</b>
<b>MK Futures Programme Manager</b>	<b>Fiona Robinson</b>	<b>01908 252318</b>
<b>Housing &amp; Regeneration</b>		
<b>Head of Communities</b>	<b>Jane Harrison</b>	<b>01908 253281</b>
<b>Head of Homelessness Prevention and Housing Access</b>	<b>Eleanor Nickless</b>	<b>01908 253032</b>
<b>Head of Neighbourhoods</b>	<b>Heledd Williams</b>	<b>01908 253696</b>
<b>Head of Asset Management and Investment</b>	<b>Stephen Young</b>	<b>01908 252272</b>
<b>Head of Regeneration</b>	<b>Aniekan Umoren</b>	
<b>Policy Insight and Communications</b>		
<b>Programme Manager – Parish &amp; Town Councils</b>	<b>Kay Pettit</b>	<b>07971 102278</b>
<b>Partnership Officer</b>	<b>Heather Baker</b>	<b>01908 254597</b>

All five Parishes

<b>MK Together Partnership Manager</b>	<b>Melanie Marshman</b>	<b>01908 252842</b>
<b>GIS Manager</b>	<b>Gillian Smith</b>	<b>01908 252569</b>
<b>Law &amp; Governance</b>		
<b>Head of Legal Services</b>	<b>Paul Cummins</b>	<b>01908 254194</b>
<b>Head of Democratic Services</b>	<b>Peter Brown</b>	
<b>Finance &amp; Resources</b>		
<b>Head of Finance (Deputy 151 Officer)</b>	<b>Anna Rulton</b>	<b>01908 252482</b>
<b>As Above</b>	<b>Natasha Hutchin</b>	<b>01908 253413</b>
<b>Head of Revs &amp; Bens</b>	<b>Robin Bates</b>	<b>07738 636820</b>
<b>Head of ICT &amp; Print</b>	<b>Hazel Lewis</b>	<b>01908 254117</b>
<b>Head of Customer Service &amp; Transformation</b>	<b>Tracey Tudor</b>	<b>01908 257979</b>
<b>Head of HR</b>	<b>Musrat Zaman</b>	<b>01908 252151</b>
<b>Children's Services</b>		
<b>Head of Delivery – Setting &amp; School Sufficiency &amp; Access</b>	<b>Marie Denny</b>	<b>01908 253935</b>
<b>Head of Setting &amp; School Efficiency</b>	<b>Cheryl Eyre</b>	<b>01908 254419</b>
<b>Head of Delivery – Corporate Parenting</b>	<b>Joanne Rabbitte</b>	<b>01908 254473</b>
<b>Head of Delivery – SEN and Disability</b>	<b>Caroline Marriott</b>	<b>01908 253138</b>
<b>Head of Delivery – Children's Social Work</b>	<b>Melinda May</b>	<b>01908 253127</b>
<b>Head of Youth &amp; Community</b>	<b>Gavin Sandmann</b>	<b>01908 253870</b>
<b>Head of Safeguarding</b>	<b>Jo Hooper</b>	<b>01908 254307</b>
<b>Adult Services</b>		
<b>Head of Older Peoples Housing and Community Support</b>	<b>Sandra Rankin</b>	<b>01908 252762</b>
<b>Head of Learning Disability, Mental Health and Autism</b>	<b>Amanda Griffiths</b>	<b>01908 253042</b>
<b>Head of Assessment and Safeguarding</b>	<b>Philip Jones</b>	<b>01908 257940</b>
<b>Head of Reablement and Hospital Discharge</b>	<b>Michelle Smith</b>	<b>01908 253592</b>
<b>Public Health</b>		
<b>Deputy Director of Public Health</b>	<b>Emmeline Watkins</b>	<b>01908 254536</b>
<b>Group Head of Commissioning</b>	<b>Mick Hancock</b>	<b>01908 257967</b>

## **CHANGES TO THE COUNCIL'S SENIOR MANAGEMENT STRUCTURE**

Our current three directorate model plus small 'corporate core' was put in place four years ago. While this has helped teams share some closer practices and standards, we're yet to achieve our ambition for fully joined up thinking and working across the whole organisation. This can be frustrating for us, for councillors and for service users.

A new senior management structure is being developed that will help us operate more effectively as one council. The proposals are:

A new Deputy Chief Executive role will lead our critical support services, as well as a number of other business areas.

Instead of the current structure of three Corporate Directors and ten Service Directors, services will be led by nine Directors, who would all be regarded as 'chief officers' and full members of our Corporate Leadership Team (CLT). As you may be aware Duncan Sharkey has left the Council and we will not be replacing either his former role (Corporate Director – Place) or the role of Corporate Director – People.

The corporate core would be replaced with a new Chief Executive's Office, led by an Assistant Chief Executive (replacing the current role of Service Director – Policy, Insight and Communications), whose focus will be on improving organisational effectiveness and performance. Public Health will move into the Chief Executive's Office.

Subject to political agreement, the new structure could be in place by early March. The CEO (Michael Bracey) will share full details then, including a detailed breakdown of who will be leading on specific areas.

### **Corporate Leadership Team - March 2019**

Chief Executive - Michael Bracey, Head of Paid Service  
Director - Health and Social Care Integration - Jill Wilkinson  
Director - Finance and Resources - Steve Richardson  
Director - Law and Governance - Sharon Bridglalsingh  
Director – Environment and Property - Stuart Proffitt  
Director - Growth, Economy and Culture - Tracy Darke  
Director - Adult Services - Victoria Collins  
Director - Children's Services - Mac Heath  
Director - Housing and Regeneration - Michael Kelleher  
Director - Strategy and Futures - Geoff Snelson  
Director - Policy, Insight and Communications - Sarah Gonsalves  
Director - Public Health - Muriel Scott

#### **Finance and Resources**

Professional finance | Revenue and benefits | HR  
ICT | Customer services | LGSS | Audit and risk

<p><b>Environment and Property</b>                  Highways   Waste and Recycling   Transportation Property   Facilities   Management                  Regulatory services   Health and Safety</p>
<p><b>Growth, Economy and Culture</b>                  Place Making   Planning   Economic development   Arts and Heritage   Historic environment                    Leisure   Sports development</p>
<p><b>Law and Governance</b>                  Legal services   Democratic services   Elections Civic events and mayoralty   Councillor support                  Governance</p>
<p><b>Policy, Insight and Communications</b>                  Policy   Partnerships   Performance Communications   Information Governance Emergency                  Planning   Community safety</p>
<p><b>Housing and Regeneration</b>                  Tenancy management   Repairs and maintenance Tackling homelessness   Strategic housing                  Regeneration and development   Private sector housing   Resident engagement and support</p>
<p><b>Children’s Services</b>                  Schools   Early years   Youth and community Special needs and disability   Safeguarding                  Family support   Children in care   Care Leavers</p>
<p><b>Adult Services</b>                  Mental health   Learning disability   Physical disability   Older people’s services Hospital discharge                    Adult safeguarding   Commissioning</p>
<p><b>Public Health</b>                  Health improvement   Health protection   Public health services   Needs assessment                  Strategy and Futures</p>

**CIF Funding**

**Cost Guidance**

The following examples may be used to estimate costs for proposed schemes. Please note that these are not definitive costs but are ‘ball park’ figures as an aid for estimation purposes. Actual costs will vary depending on local conditions and may increase due to additional requirements such as traffic management, underlying utilities and installation costs.

**Play Areas: (The following includes some installation costs)**

- Roundabout £5,000
- See-Saw £3,000

All five Parishes

- Spring Animal £2,000
- Small Play Module (< 8 years) £8,000
- Large Play Module (older children) £12,000 plus
- New Bench Installation up to £1,200 (Depending on design of bench and base required)

### **Landscaping**

Landscaping schemes are delivered by our service partner, Serco. Enquiries should be made via the Serco Services for Parishes web page. <https://www.milton-keynes.gov.uk/your-council-and-elections/councillors-and-committees/parish-and-town-councils/information-for-parish-and-town-councils/serco-services-for-parishes>

If a parish is devolved they can self-serve.

This could include

- Pond enhancement (min costs in £1,000s)
- Removal and replacing whole beds/shrubs
- Seating area /paving works (will be in order of £1,000's depends on scope of works)

### **Gateway Features**

- 'Welcome To' signage £4,000 (based on 2 signs. This also includes installation).
- Village Gateway up to £10,000 (depending on design and cost of gateway sign selected).

### **Traffic Calming**

- Speed Cushions from £35,000 (Based on 4 speed humps, includes minor footway improvements and street lighting works also includes Traffic Regulation Order notices)
- Build-Outs / Pinch Points from £25,000 (includes two priority narrowing features at the entrance point into the village, cost for sign illumination, lighting column relocation, installation of traffic island associated road closure with Traffic

Management)

- Vehicle Activated Signs £5,000 (includes installation and a maintenance agreement)

All five Parishes